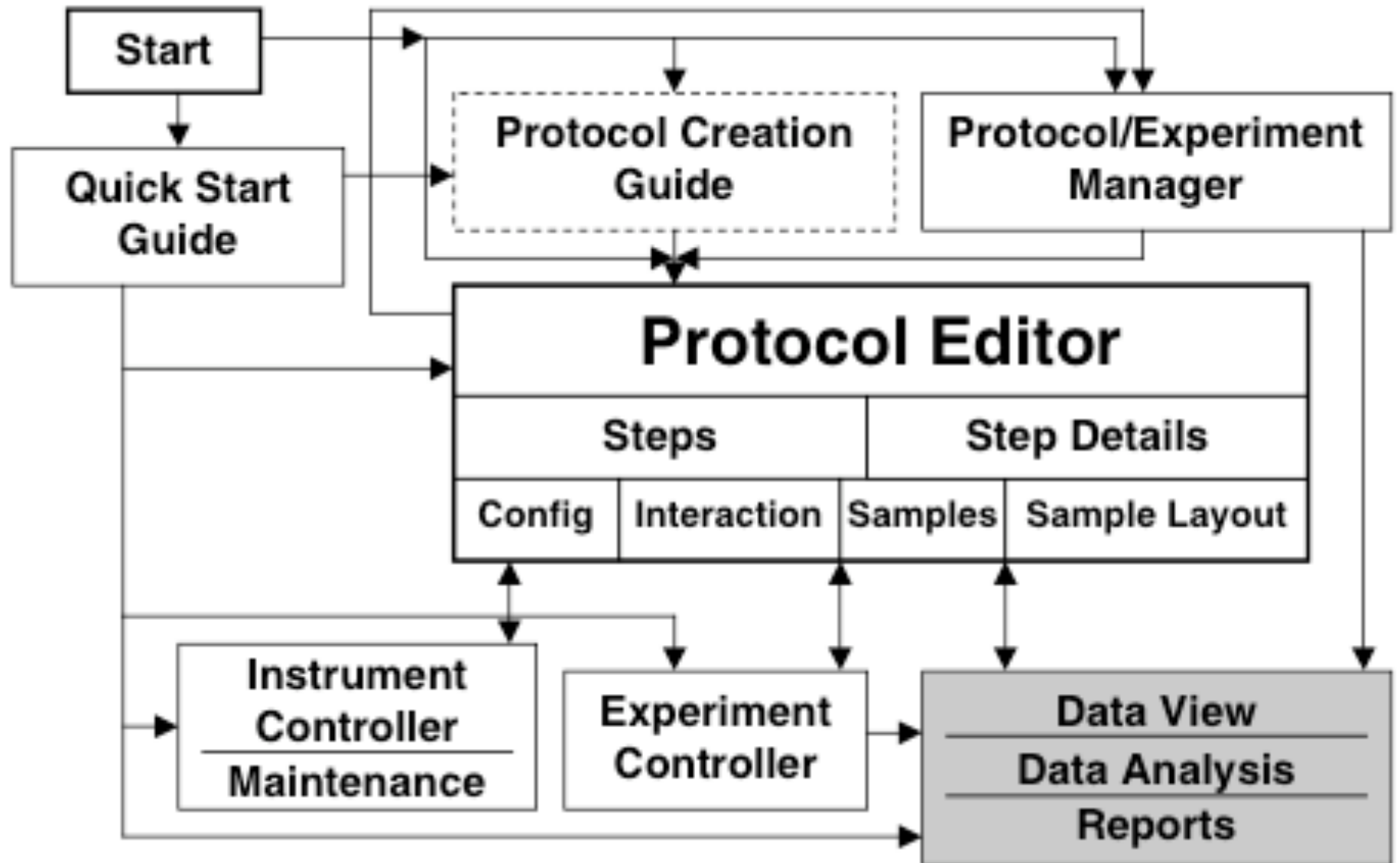


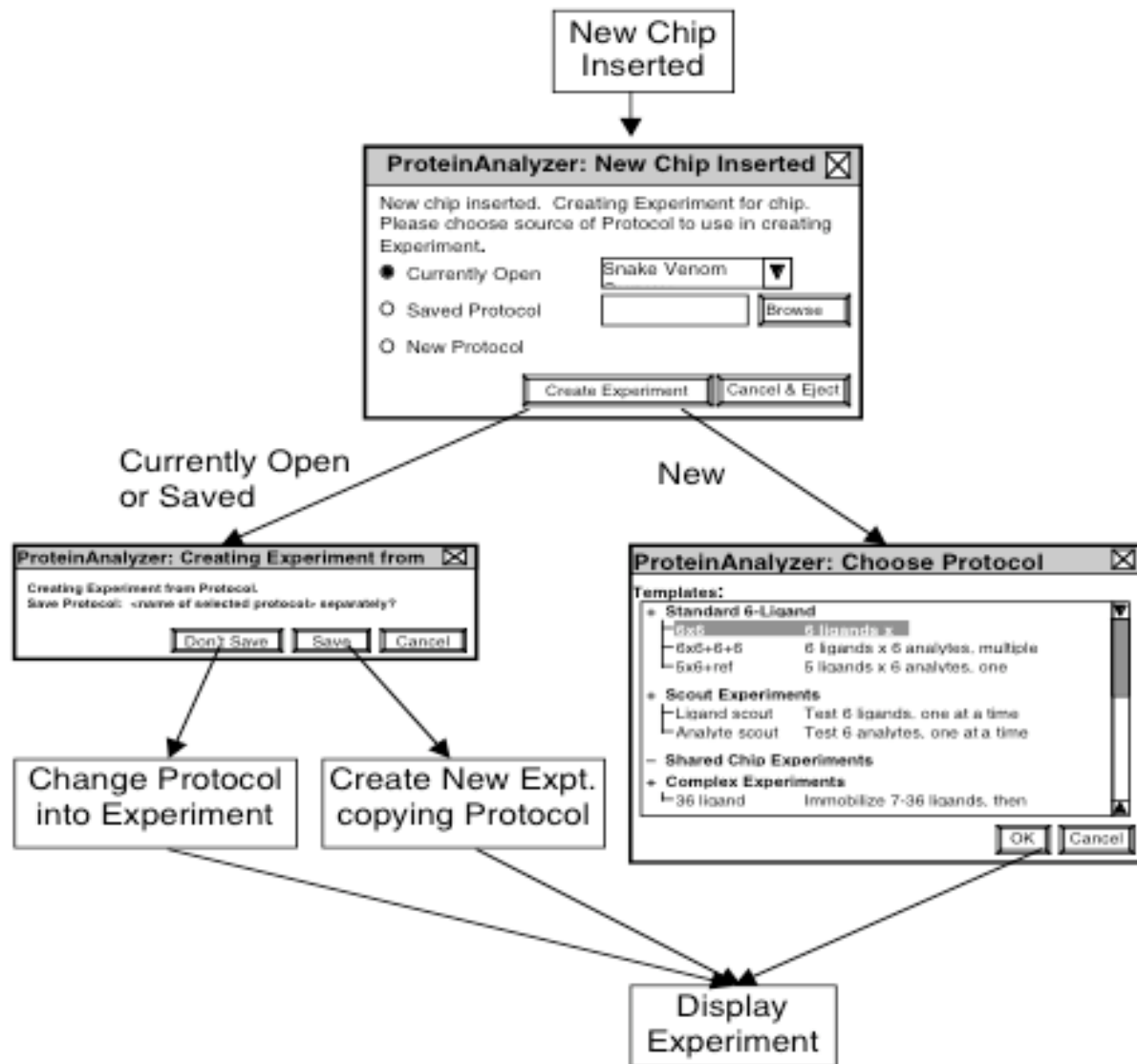
“BioLogic” App for Protein Analysis

Wireframe Sketches
(selection)

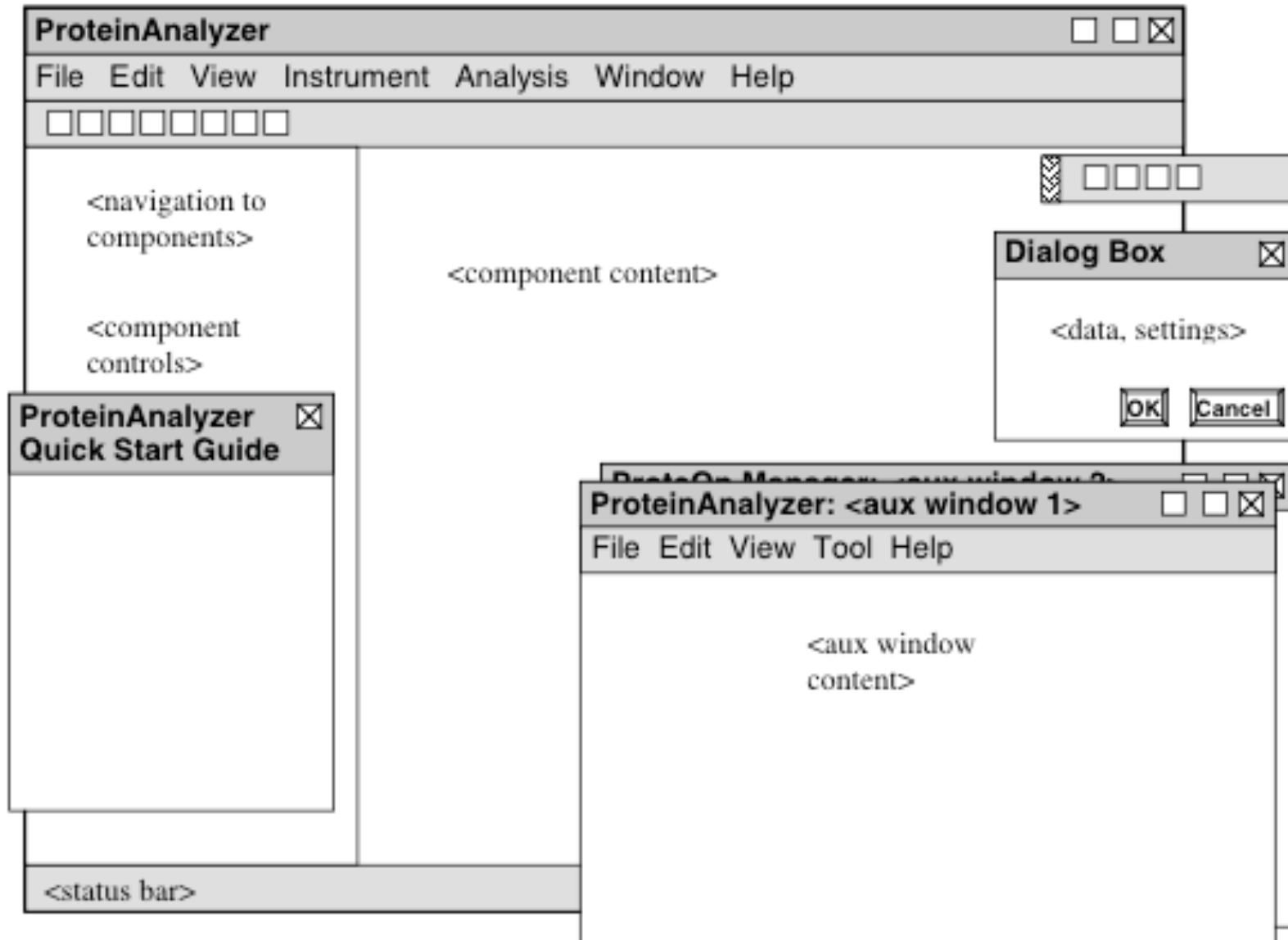
Flow Between Major Components



Example of Flow Between Screens



All of the App's Windows



Expt Protocol Configuration Screen

ProteinAnalyzer [] [] [X]

File Edit View Instrument Analysis Window Help

□ □ □ □ □ □ □ □

Instrument

Protocol

- **Configuration**
- Samples
- Steps

Execution

Raw Data

Preprocessed Data

Analysis

Reports

Expt. Description

Chip Type NLC ▾

Temperature

	Experiment	Current
Chip	<input type="text" value="25"/> ° C	<input type="text" value="27"/> ° C
Sample	<input type="text" value="27"/> ° C	<input type="text" value="24"/> ° C

[Instrument Settings](#)

Auto-Sampler — **Layout** — **Max Vol/well**

Rack
 2 Plates
 Plate+Trough
 uL

Experiment Defaults Show Save as App Defaults

Settings	Injection Type				
	Ligand	Analyte	Activation	Deactivate	Regenera
Orientation	Vertical	Horizontal	Vertical	Vertical	Horizontal
Flow Rate	50 uL/min	50 uL/min	50 uL/min	50 uL/min	50 uL/min
Separation	High	High	Medium	Low	Medium
Pre-wash	Medium	Medium	Medium	Medium	Medium
Post-wash	Medium	Medium	Medium	Medium	Medium
Dissociation	0 min	10 min	0 min	0 min	2 min
Flow Stabiliz.	0 min	3 min	0 min	0 min	2 min

Inactive if not connected to instrument

Clicking on unit pops up units menu

When Plate+Trough selected, two vol. fields

Table & button visible only if Show checkbox checked

Choices determined at startup from configuration file

Expt Protocol Samples Screen

ProteinAnalyzer

File Edit View Instrument **Analysis** Help

Instrument

Protocol

- Configuration
- **Samples**
- Steps
- Sample Layout
- Review

Execution

Raw Data

Preprocessed Data

Analysis

Reports

+ 1. Ligands Type: Ligand Desc: [Dipraxa normal conc vs. less...](#)

Used in Steps: Ligand 1, Ligand 2

Sample	Conc.	Type	Description	Ltd Vol?
dipraxa	.1 mM	(C)	Normal concentration of...	1 mL
dipraxa	.05 mM	(S)	Half normal	
dipraxa	.025 mM	(S)	Quarter normal	
dipraxa	.0125 mM	(S)	Eighth normal	
dipraxa	.00625 mM	(S)	Sixteenth normal	
dipraxa	.00312 mM	(S)	Thiryssecond normal	

+ 2. Analytes Type: Analyte Desc: [AZT...](#)

Used in Steps: Ligand 1, Ligand 2

Sample	Conc.	Type	Description	Ltd Vol?
AZT	.1 mM	(C)	Normal concentration of...	1 mL
AZT	.05 mM	(S)		
AZT	.025 mM	(S)		
AZT	.0125 mM	(S)		
AZT	.00625 mM	(S)		
AZT	.00312 mM	(S)		

- 3. Activator Type: Activate Desc: ...

Clicking on + hides or shows table of samples in panel.

Scrollbar appears when content is longer than screen

Expt Protocol Steps Screen

ProteinAnalyzer File Edit View Instrument Analysis Window Help

Instrument Protocol

- Configuration
- Samples
- **Steps**
- Sample Layout
- Review

Exec Raw Preprocessed Data Analysis Reports

Steps added from palette via drag-and-drop

Arrow buttons move step selection up & down

Palette

Step Groups

- Immob.
- Stabiliz
- Interact

Steps

- Activate
- Ligand
- Analyte
- Regen.
- Co-Inj.
- Pause

Steps

- + Immobilization
 - Activation
 - Ligand
 - Deactivation
- + Stabilization
- + Interaction
 - Analyte
 - Regeneration
 - Analyte
 - Regeneration
 - Analyte

Step Details

Type: Analyte

Flow Rate: x Vol. = Time

Dissociation:

Ligand 1	
dipraxa	0.1
dipraxa	0.01
dipraxa	0.001
dipraxa	0.000
dipraxa	0.000
dipraxa	0.000

Analyte 1	
AZT	0.1
AZT	0.01
AZT	0.001
AZT	0.000
AZT	0.000
AZT	0.000

Copy ↑ ↓ Del

Expt Protocol Sample Layout Screen

ProteinAnalyzer
File Edit View Instrument Analysis

Wells spaced and grouped to show how they cluster into panels

Defined sample panels listed next to position

Sample Description and Volume Limit not shown here

This column shows total vol. required for each sample

Sample data not editable in Sample Layout screen.

Instrument

Protocol

- Configuration
- Samples
- Steps
- **Sample Layout**
- Review

Execution

Raw Data

Preprocessed Data

Analysis

Reports

6
5
4
3
2
1

A B C D E F G H I J K L

5 4 3 2 1

Sample Panels

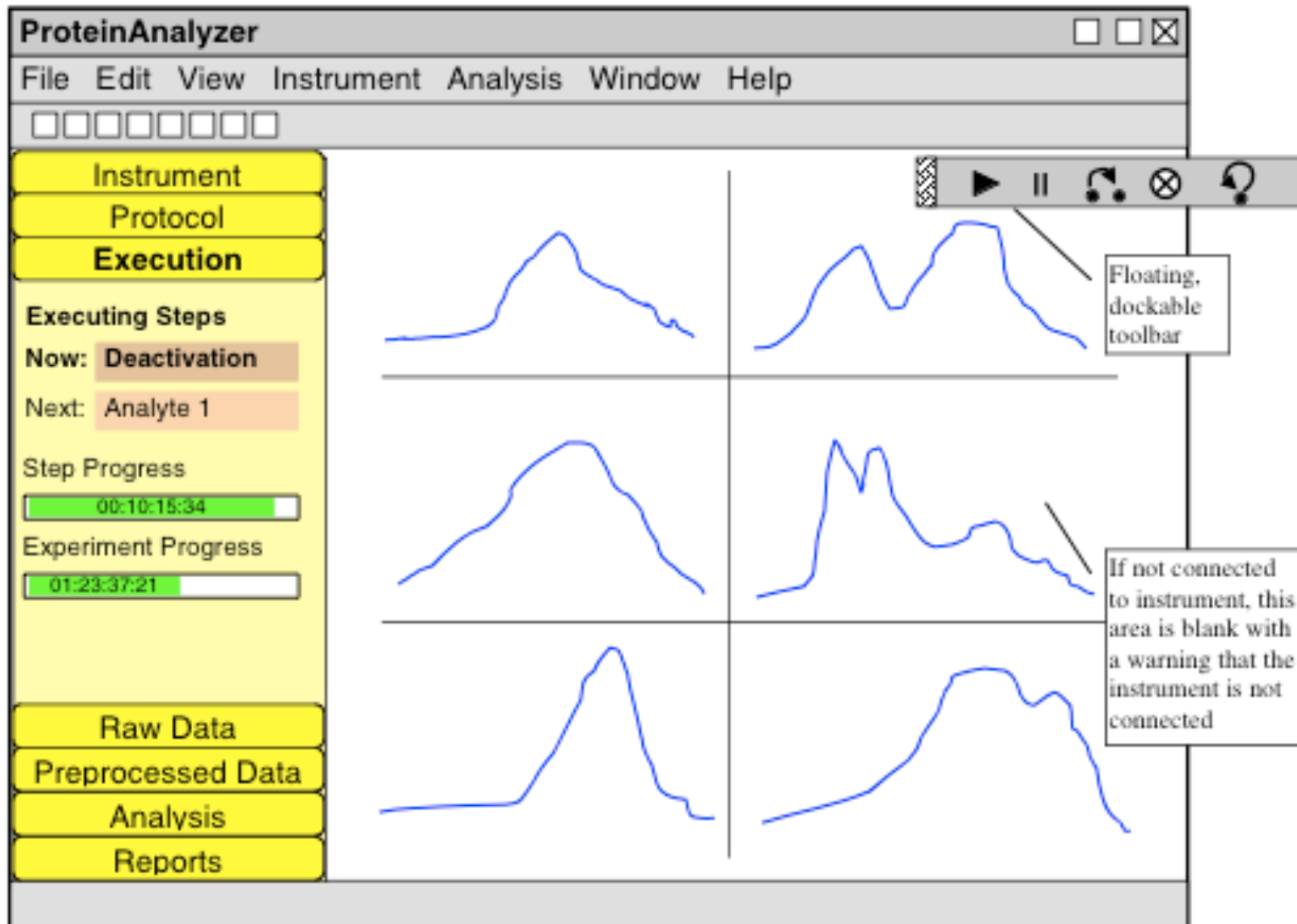
+ 1. Ligands Type: Ligand Desc: [Dipraxis normal conc vs. le...](#)

Used in Steps: Ligand 1, Ligand 2

Sample	Conc.	Type	Tot. Vol.
dipraxis	.1 mM	(C)	
dipraxis	.05 mM	(S)	
dipraxis	.025 mM	(S)	
dipraxis	.0125 mM	(S)	
dipraxis	.00625 mM	(S)	
dipraxis	.00312 mM	(S)	

- 2. Analytes Type: Analyte Desc: ...

Expt Execution Screen: Design 1



Expt Execution Screen: Design 2

